

**BRIGHTON RACECOURSE**

— ○ EST 1783 ○ —

# 2024 EVENT HIRE

**A WINNING LOCATION**

**SET WITHIN 20 ACRES OF BEAUTIFUL COUNTRYSIDE, WITH STUNNING VIEWS  
OVER THE CITY & ENGLISH CHANNEL, BRIGHTON RACECOURSE PROVIDES  
A WINNING LOCATION FOR ANY EVENT.**

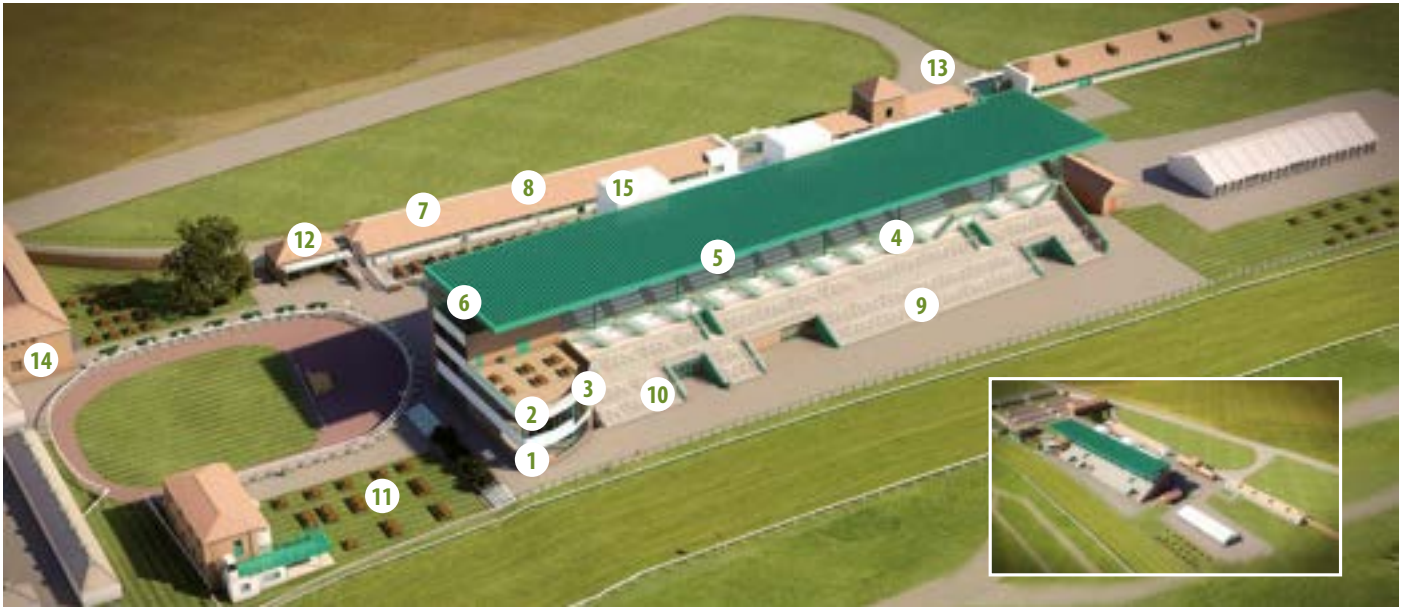




## WELCOME

Brighton Racecourse has a rich history dating back to 1783 and is a unique venue for racing and events set above the vibrant city of Brighton.

We have a number of versatile suites and boxes to choose from along with picnic lawns and ample outside space, all of which provide stunning views across the Sussex countryside and English Coastline - a wonderful backdrop to use for any event. The energy and atmosphere, that comes from the venue's sporting roots, injects life into any event and leaves guests with an enjoyable and memorable experience long after they leave.



## SITE MAP

- 1. WINNING POST SUITE
- 2. MARINA SUITE
- 3. SUSSEX SUITE
- 4. PRINCE REGENT SUITE
- 5. EXECUTIVE BOXES
- 6. SILKS SUITE

- 7. OWNERS & TRAINERS SUITE
- 8. PADDOCK BOX
- 9. GRANDSTAND HALL
- 10. PREMIER HALL
- 11. PREMIER ENCLOSURE LAWN
- 12. WINNER'S SUITE

- 13. LIVE EVENT RECEPTION
- 14. RACECOURSE RECEPTION
- 15. ANNUAL MEMBER'S LOUNGE





## SEATING CAPACITIES

### GRANDSTAND HALL

THEATRE	400
EXHIBITIONS (m <sup>2</sup> )	985
BANQUET	+400
DINNER	450
CABARET	250

### PREMIER HALL

THEATRE	250
EXHIBITIONS (m <sup>2</sup> )	580
BANQUET	200
DINNER	250
CABARET	130

### SILKS SUITE

THEATRE	150
EXHIBITIONS (m <sup>2</sup> )	340
CLASSROOM	60
U-SHAPE	38
BOARDROOM	50
BANQUET	150
DINNER	170
CABARET	100

### SUSSEX SUITE

THEATRE	20
EXHIBITIONS (m <sup>2</sup> )	20
CLASSROOM	10
U-SHAPE	20
BOARDROOM	20
DINNER	24
CABARET	16

### MARINA SUITE

THEATRE	40
EXHIBITIONS (m <sup>2</sup> )	42
CLASSROOM	20
U-SHAPE	20
BOARDROOM	20
DINNER	48
CABARET	30

### WINNING POST SUITE

THEATRE	64
EXHIBITIONS (m <sup>2</sup> )	76.5
CLASSROOM	34
U-SHAPE	26
BOARDROOM	40
DINNER	60
CABARET	50

### PAVILION

THEATRE	50
EXHIBITIONS (m <sup>2</sup> )	74.5
CLASSROOM	30
U-SHAPE	18
BOARDROOM	22
DINNER	60
CABARET	30

### PRINCE REGENT SUITE

THEATRE	150
EXHIBITIONS (m <sup>2</sup> )	265
CLASSROOM	50
BANQUET	120
DINNER	150
CABARET	84

### OWNERS & TRAINERS SUITE

THEATRE	100
EXHIBITIONS (m <sup>2</sup> )	100
CLASSROOM	40
U-SHAPE	30
BOARDROOM	40
DINNER	50
CABARET	50

### THE PADDOCK BOX

THEATRE	40
EXHIBITIONS (m <sup>2</sup> )	70
CLASSROOM	10
U-SHAPE	18
BOARDROOM	20
CABARET	20

### EXECUTIVE BOXES / ANNUAL MEMBER'S LOUNGE

THEATRE	25
CLASSROOM	10
U-SHAPE	6
BOARDROOM	8
CABARET	10*

\* Executive boxes 1-5 have a capacity of 10, box 6 has a capacity of 20.

## GRANDSTAND HALL

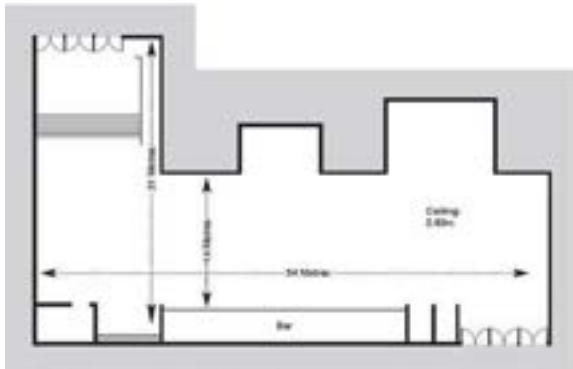
Room size: 985m<sup>2</sup>. 400 guests seated for dinner

Grandstand Hall is our largest indoor event space here at Brighton Racecourse. Located on the ground floor, the suite's main entrance includes a separate reception area and has two additional trackside access points with large folding doors and additional ramps for easy unloading – ideal for events with large set ups. There is even scope to unload large arctic lorries straight in to the room.

The hall is adaptable to suit a range of events from gala dinners and balls to car launches, exhibitions, fairs, parties and everything in between.

### Key Features:

- Ground floor access
- Accessible entrance/exits
- Male and female toilets
- Café area
- Large bar
- Multiple plug sockets
- Access to outdoor area
- Easy loading access





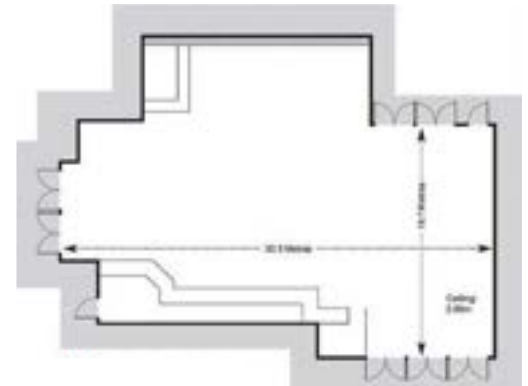
## PREMIER HALL

Room size: 580m<sup>2</sup>. 200 guests seated for dinner

Premier Hall (located directly next door to Grandstand Hall) is often used as additional space for large events and shows, or separately for large conferences, dinners and parties. It is a versatile ground floor space with separate reception area and two additional access points. The hall leads out on to our Premier Lawn which is the perfect space for parties, team building events and any other outdoor activities with a view over the coastline!

Key Features:

- Ground floor access
- Accessible entrance/exits
- Male and female toilets
- Café area
- Large bar
- Multiple plug sockets
- Access to outdoor area
- Easy loading access





## SUSSEX, MARINA AND EXECUTIVE BOXES

Capacity 10-40 guests

Smaller capacity suites perfect for small meetings, workshops and training days, use as breakout suites or even intimate dinners with stunning views over the downs and the coastline.

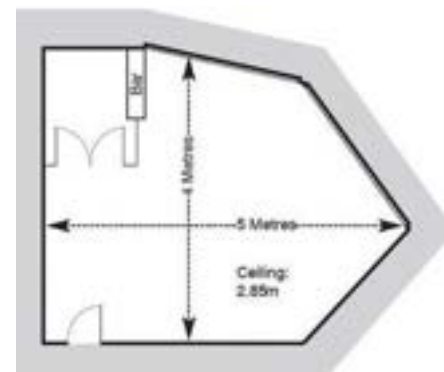
Key Features:

- Natural daylight
- Stunning scenic views
- Male and female toilets accessible on same floor
- Private bar



Top: Marina Suite

Bottom: Sussex Suite







## SILKS SUITE

Capacity up to 150 guests theatre style / 120 sit down dinner

Silks suite is one of the Racecourse's most popular suites due to its panoramic views over Brighton, the Downs and the coastline. It has a modern bar, plenty of natural daylight and a private rooftop terrace to impress all your guests with some of the best views in the city. A regular choice for celebrations, special occasions, networking events and conferences for between 60-200 guests.

Key Features:

- Located on the second floor
- Private modern bar
- Rooftop terrace with panoramic views
- Light and spacious with plenty of natural daylight
- Male and female toilets
- Access out to top of Grandstand
- Stair and lift access





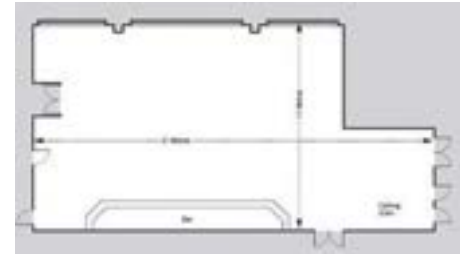
## PRINCE REGENT SUITE

Capacity up to 120 guests

Named after the Prince of Wales who took residency in Brighton in the 1800s, this suite is versatile for a range of events; including conferences and exhibitions, parties and dinners. Guests can head out the doors on to the Grandstand to take a break and enjoy the views.

Key Features:

- Located on the second floor
- Stair and lift access
- Male and female toilets
- Large bar
- Access to top of Grandstand
- Stunning views



## WINNING POST SUITE

Capacity up to 60 guests

Our Winning Post suite, aptly named after the racetrack's 'winning post' situated in direct sight of the suite, is one of our most popular suites for meetings and smaller parties. With five steps up to the room, it has magnificent views over our racetrack and the marina giving your event an extra special feel, whatever the occasion.

Key Features:

- Located on the ground floor
- Small bar available
- Inbuilt screen
- Stunning views
- Access to premier lawn





## OWNERS AND TRAINERS SUITE / PADDOCK BOX

Capacity up to 100 guests theatre style

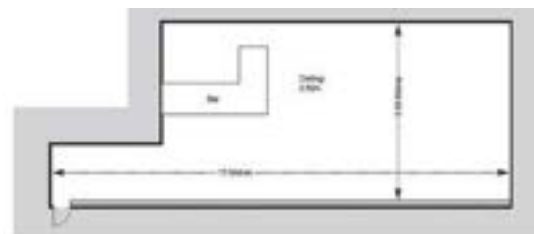
Located on the ground floor only a short walk from our complimentary on-site car parks. Our Owners and Trainers suite and Paddock Box offer a great talking point for guests as the walls are lined with memorabilia showcasing the history of Brighton Racecourse. The Paddock Box even includes an original Jockey weighing scale as a unique feature of the décor. These rooms can be hired individually or together – adjoined by a short corridor containing male, female and disabled toilets.

### Key Features:

- Ground floor/disabled access
- Unique décor
- Natural daylight
- Inbuilt screens
- Inbuilt bar (Owners and Trainers suite only)
- Male, female and accessible toilets



Bottom: Owners & Trainers Suite, Top: Paddock Box





## ANNUAL MEMBERS LOUNGE, WINNERS SUITE AND PAVILION SUITE

Capacity 10-50 guests

Whether you're looking for a small meeting space or an additional breakout room, these suites provide the perfect option. The Annual Members Lounge and Winners suite offer a great location if you need ground floor access, otherwise if you're going for views, the Pavilion Suite is the one to go for.

Key Features:

- Ground floor access (Annual Members Lounge and Winners Suite)
- Stunning views from Pavilion Suite
- Natural daylight







## OUTSIDE SPACE

Alongside a range of multipurpose suites, Brighton Racecourse also offers large areas of outside space and complimentary car parks. A regular host of fun runs, team building activities, car shows, firework nights, summer barbeques and even music concerts, we have an outdoor capacity of over 5000 including hard standing and grass areas. No event is too complex and we will work with you to maximise all available space to make the most out of your event!

### Key Features:

- Free parking for over 1000 vehicles
- Access for arctic lorries
- Turnstile area perfect for paid attendance
- Outdoor power supply
- Outdoor water supply
- Toilet blocks
- Catering units and facilities
- Hard standing and grassy areas
- Scenic views







## CATERING FOR YOUR EVENT

With a resident head chef on site, we pride ourselves on putting together a beautiful menu that suits your tastes, budgets and any dietary requirements needed.

We have a number of catering packages available and a number of dining options to choose from.

From tea, coffee and biscuits, to bowl food and seasonal buffets, to 3 course dining experiences, we can accommodate any requirement.

Please contact our team for extensive catering packages available.

## EVENT PLANNING

We have a professional team of event managers and coordinators who are experienced in delivering all types of events from meetings of 20 to large music festivals.

Right from your initial enquiry we guarantee the smooth running of the event.





## HOW TO FIND US

Brighton Racecourse, Freshfield Road  
Brighton, East Sussex, BN2 9XZ



Brighton Racecourse is easy to reach from the A27 Brighton bypass.  
If you are approaching Brighton on the A23 you need to head east on the A27.



Free parking for up to 1000 cars



Brighton is less than an hour from London by train and there are services from Victoria, London Bridge and Kings Cross.  
There are also frequent coastway services operating from Eastbourne, Lewes, Hastings, Worthing and Portsmouth.

## CONTACT US

Please contact our friendly team to discuss your event and answer any questions you have.

PHONE 01273 603580

EMAIL [events@brighton-racecourse.co.uk](mailto:events@brighton-racecourse.co.uk)

WEBSITE [brighton-racecourse.co.uk](http://brighton-racecourse.co.uk)

Follow us



BrightonRace



BrightonRacecourse